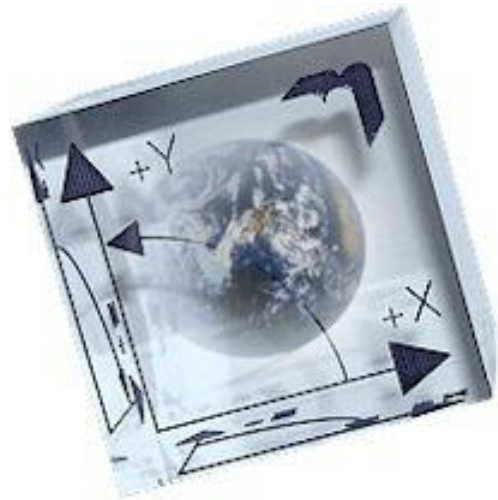


# Improvements

## Metrosoft *CM 3.110*

Highlights, new functions, improvements



# Improvements Metrosoft CM 3.110

## Highlights, new functions and improvements in Metrosoft CM 3.110

Please note that the release notes contain the detailed range of functionality of Metrosoft CM 3.110.

1.	Feature determination .....	1
2.	System .....	1
3.	Data .....	1
4.	Probe .....	2
5.	Periphery.....	2
6.	CmConfig.....	3

### 1. Feature determination

- **Position of the element: Evaluate in polar coordinates [F2]**  
Now all 3 components (R,  $\alpha_x$  and  $\beta_{xy}$ ) are activated in the dialog by default; before only R was activated.
- **ISO 1101 : Perpendicularity:**  
The perpendicularity of a plane in reference to an axis can now also be calculated considering the form deviation. To do so, the option "Measured points" is to be selected under effective length.

### 2. System

- **Country settings**  
Dialog and report language "Slovak" is available again.

### 3. Data

- **Inventor converter**  
New CAD converter for Autodesk Inventor formats V11 to 2013.
- **CATIA V5 converter**  
Element names created in CATIA V5 are adopted during the conversion into the ACIS (SAT, SAB) format.  
The formats R6 to R22 are now supported.
- **Parasolid converter**  
The formats 14 to 25 are now supported.

- **ProEngineer converter**  
The formats 16 to Creo 2.0 are now supported.
- **Siemens NX converter**  
The formats NX1 to NX8 are now supported.
- **SolidEdge converter**  
The Solid Edge CAD converter is no longer available.
- **SolidWorks converter**  
The formats 2003 to 2013 are now supported.

#### 4. Probe

- **Renishaw PH10-iQ**  
The Renishaw probe head PH10-iQ is supported. The PH10-iQ includes a CAA file which is used for the automatic compensation.

By doing so, all 720 positions can be used after calibrating only 6 angle positions.



#### 5. Periphery

- **Leica Laser Tracker**  
It is now possible to assign different commands to all 4 buttons of the new Leica T-Probe.

The trigger signal of the triggered probe "T-Mac Probe" is now supported.

- **Creiform HandyProbe**  
The manual and mobile measuring machine Creiform C-Track & HandyProbe is now supported.

- **WENZEL Phoenix II**  
The new PHOENIX II sensor has been integrated. The functionality is very similar to the functionality that is available with the existing Phoenix I sensor.

The automatic exposure setting as well as the point calculation for gap and flush are not available yet.

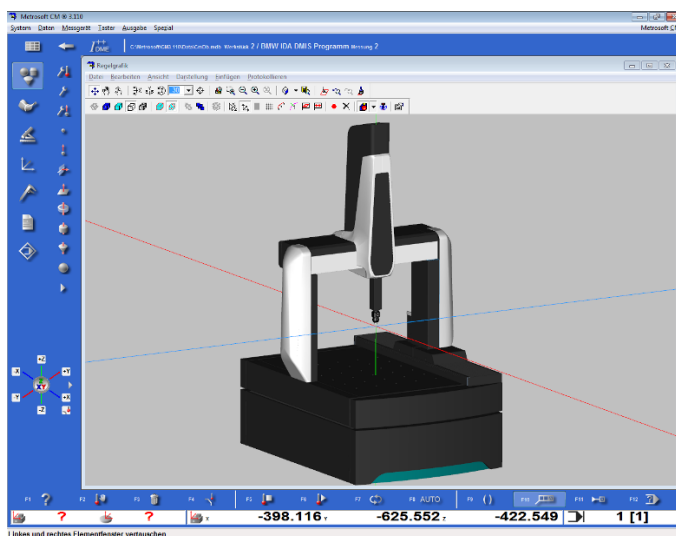


- **ROMER Absolute Arm**  
The manual and mobile Romer Absolute measuring arm is now supported.
- **ROMER MultiGage**  
The manual and mobile Romer Multi Gage RDS is now supported.
- **TESA MultiGage**  
The manual and mobile TESA Multi Gage RDS is now supported.



## 6. CmConfig

- **Configure machine**  
Further WENZEL CMM models for the display in the 3D graphics and the offline programming have been integrated: LH (2G) 65 (750), LH (2G) 87 (1000) and LH (2G) 108 (1600).



**Note**

Please note that all Metrosoft CM 3.110 functions and their description are available in the release notes.

Subject to change without notice.

**WENZEL Metromec AG**

Rheinfelsstrasse 1  
CH-7007 Chur / Switzerland

Tel: +41 81 257 07 00

Fax: +41 81 257 07 01

[metromec@metromec.ch](mailto:metromec@metromec.ch)

[www.metromec.ch](http://www.metromec.ch)